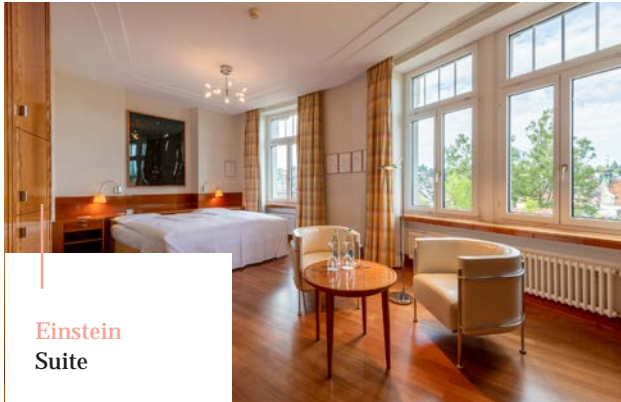


# RECOMMENDED ACCOMMODATIONS



Source: Freepik



**Einstein  
Suite**



## Einstein St.Gallen Healthcare

### Rooms & Suites

- 113 air-conditioned rooms, suites and apartments (14 - 100 m<sup>2</sup>)
- 2 barrier-free rooms
- Family rooms with connecting door
- 24/7 Reception
- Luggage service
- Limousine service to the clinic - special prices

### Eating & Drinking

- Einstein Gourmet: 18 points GaultMillau & 2 Michelin stars
- Bistro St.Gallen: International and light cuisine
- Dietary dishes on request
- Room service
- Einstein Bar with Davidoff Cigar Lounge
- Weinstein Vinotheque: Bordeaux and Swiss wine
- Wine cellar Einstein: Over 2900 wine positions

### Fitness & Wellness

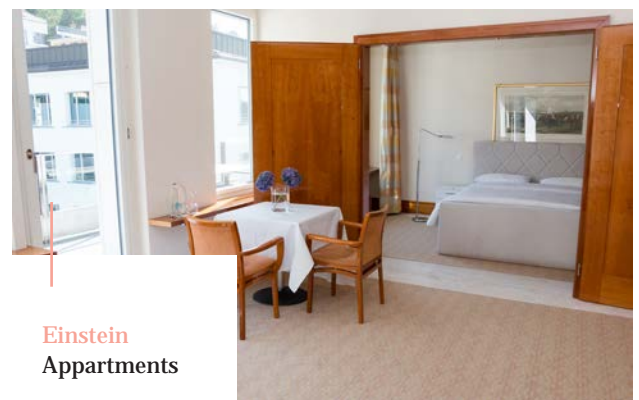
- Over 3'000 m<sup>2</sup> fitness and wellness area on five floors
- Massages
- Steam bath, bio and Finnish Sauna
- Ice grotto
- Crystal bath

### The Einstein - In the heart of St.Gallen

The stylish 4\* Superior Hotel Einstein St.Gallen is situated in the heart of the city of St.Gallen in a quiet location. It is located directly next to the pedestrian zone and between the Red Square and the world-famous UNESCO monastery quarter of the Old Town. The hotel is within five minutes walking distance from St.Gallen train station. The rooms and suites, renovated with attention to detail, feature walnut furnishings and pleasant pastel colors. In the Bistro St.Gallen we serve international and light dishes from early morning until late at night. On request, we prepare dietary dishes for our guests. You can relax in the fitness and wellness area, which is equipped with various machines, saunas and a crystal bath. We have special rates for the transfer to the clinic. for The entire Einstein team will take care of your well-being, your wishes and support you on your health journey.

Welcome home!

More information



**Einstein  
Apartments**

# EINSTEIN

ST. GALLEN



Abbey District  
St. Gallen



## Einstein St. Gallen Healthcare

### Transfer

- From Einstein St. Gallen to Paracelsus Clinic
- CHF 20.00 one way

### City of St. Gallen

- Picturesque old town
- Local recreation area "Drei Weiern"
- Shopping
- Maestrani's Chocolarium
- Textile museum and Art museum

### Lake Constance

- Boat trips
- Walks

### Appenzell

- Säntis - 2502m high
- Appenzell show dairy

**For reservations please use the following promotion codes on our website:**

- 1 - 7 nights: PKL2024
- from 8 nights: PKLLONG2024

### Room rates

room category	single or double	up to 7 nights	8+ nights
Economy	single	CHF 210.00	CHF 195.00
Comfort	single	CHF 250.00	CHF 235.00
	double	CHF 315.00	CHF 300.00
Superior	single	CHF 330.00	CHF 315.00
	double	CHF 395.00	CHF 380.00
Junior Suite	single	CHF 430.00	CHF 415.00
	double	CHF 495.00	CHF 480.00
Appartment with balcony		CHF 495.00	CHF 325.00
Valet Parking		CHF 30.00	CHF 30.00
Extra Bed		CHF 110.00	CHF 110.00

The rates include the overnight stay, breakfast buffet at Bistro St. Gallen, free entrance to the fitness and wellness area (admission from 14 years accompanied by ts or legal gurdian), free Wi-Fi, public transportation in the zones 210, 211 and 231, service, VAT and taxes. The city tax of CHF 4.00 per person and night is not included in the price.



Säntis -  
the mountain





#### Rooms and Amenities:

- 32 air-conditioned rooms with minibar
- 12 rooms with kitchenette
- Pillow menu
- Nespresso coffee machine
- «Rituals» toiletries
- «Victorinox» backpack
- Yoga mat
- Free Wi-Fi

#### Food and Beverages

- Sumptuous Sorell breakfast with regional ingredients
- Options according to the Paracelsus diet and programs available upon request
- Restaurants for dinner in the immediate vicinity

#### Services:

- Reception staffed for 16 hours, night porter available on call
- Luggage storage
- Complimentary bicycles
- Shuttle service to the Paracelsus Clinic for CHF 20.00 per trip

**For reservations at special rates, please use the following promotion code on the Sorell Hotel City Weissenstein website:**

- C\_Para24

#### Sorell Hotel City Weissenstein

The 4-star Sorell Hotel City Weissenstein, which opened in St.Gallen in the summer of 2020, is perfectly located within walking distance of the train station, numerous shops, restaurants, and the historic old town. The renovated boutique hotel is characterized by urban charm and innovative interior design. As a tribute to the historic textile city of St.Gallen, stylish and individual rooms have been designed, with twelve rooms equipped with a kitchenette for long-term stays. The highlight of the hotel is the two atelier rooms in the attic. The hotel is barrier-free and has an elevator.

More Information





## HOTEL ZUR LINDE \*\*\*, BÜHLERSTRASSE 87, TEUFEN



The "Linde" in Teufen is a hotel with a classical ambiance, lots of charm, and a very personal service. The hotel, run as a family business in its fourth generation, presents a large garden that invites you to linger.

The majority of the rooms are located on the quiet south side overlooking the garden park with a view of the Alpstein. The rooms are equipped with Nordic sleeping comfort, shower or bathtub, toilet, LCD digital TV, radio, safe, hairdryer, telephone, and optionally with a minibar. Wi-Fi is available throughout the entire house for free. Upon request, a kettle is available in your room.



### Further information:

- Special conditions - please inquire about special prices for Paracelsus guests when booking directly!
- Nutrition according to the Paracelsus Clinic dietary guidelines including Paracelsus programs such as liver detoxification, immune boost, etc. available (breakfast, dinner)
- External guests are also warmly welcome for breakfast and dinner
- Elevator available for double rooms, yet the hotel does not provide wheelchair accessibility
- Free shuttle service to the clinic and back



### FREE FOR OUR GUESTS

Welcome aperitif, tea, fruit, deckchairs in the garden park, free admission to the Folklore Museum Stein incl. cheese-making demonstration & to the indoor swimming pool Speicher or the outdoor adventure pool Teufen

T +41 71 335 07 37  
info@hotelzurlinde.ch  
www.hotelzurlinde.ch

Clinic Shuttle Service ✓

Price range:



## PENSION ALPENHEIM \*\*\*, GREMMSTRASSE 14, TEUFEN



Cozy and familiar bed and breakfast with modern furnished rooms and a beautiful view of the Alps. A guest kitchen and a well-kept garden are available for shared use.

- Breakfast according to Paracelsus diet possible by prior arrangement
- Guest kitchen available with all cooking utensils for self-catering
- No elevator available
- Free shuttle service to the clinic and back



T +41 71 333 12 24  
kontakt@pension-alpenheim.ch  
www.pension-alpenheim.ch

**Clinic Shuttle Service** ✓

**Price range:** \$

## ANKER HOTEL & RESTAURANT \*\*\*, DORF 10, TEUFEN

The Hotel & Restaurant Anker impresses with its modern 10 rooms, which have been renovated with great attention to detail. Thanks to its central location and the restaurant, it is the ideal place to spend time.

- No elevator available
- Free shuttle service to and from the clinic



T +41 71 333 13 45  
info@anker-teufen.ch  
www.anker-teufen.ch

**Clinic Shuttle Service** ✓

**Price range:** \$



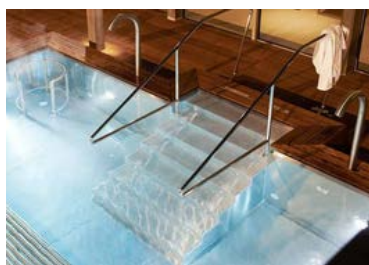


## OBERWAID – The Hotel. The Clinic. \*\*\*\*<sup>S</sup>, RORSCHACHER STRASSE 311, ST.GALLEN



First-class spa hotel with hotel and medical center and views over Lake Constance or its own park. The hotel has three restaurants with outdoor terraces, a spa area with hammam, indoor pool, Tau Spa Suite and sauna. The 144 comfortable and modern hotel rooms range from 34 square meter superior rooms to the 110 square meter Oberwaid Suite.

- Paracelsus diet and programs possible
- Elevator available
- Wheelchair-accessible rooms available
- Distance to Paracelsus Clinic: 20 minutes by taxi, 40 minutes by public transportation
- Own bus stop directly at the in-house park



T +41 71 282 0000  
info@oberwaid.ch  
www.oberwaid.ch

**Taxi transfer to the clinic (excl.)**

Price range:



## HOTEL DOM \*\*\*, WEBERGASSE 22, ST.GALLEN

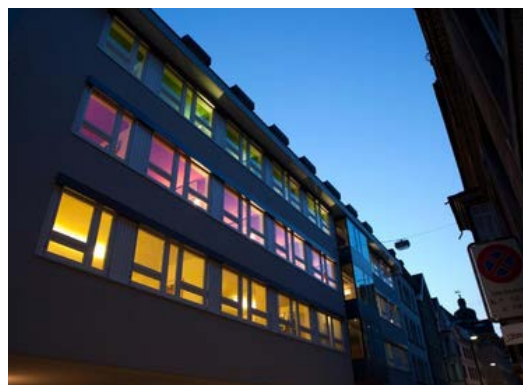
The Hotel Dom welcomes you in the old town of St.Gallen - just a few walking minutes from the main train station and the collegiate church of St.Gallen, whose medieval library is a UNESCO World Heritage Site. The hotel's integration concept offers people with increased support needs a workplace. The modern rooms at the Hotel Dom come with a private bathroom (budget rooms with shared bathroom), a radio, a telephone and a TV. Wi-Fi is free of charge in the rooms.

- Breakfast and lunch only - local restaurants within walking distance
- Elevator and wheelchair-accessible rooms available
- Free public transport ticket to the clinic

T+41 71 227 71 71  
info@hoteldom.ch  
www.hoteldom.ch

**Free public transport ticket ✓**

Price range:

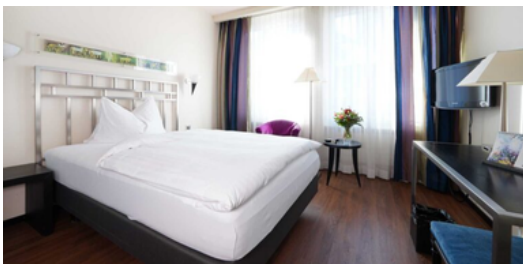


## HOTEL METROPOL \*\*\*, BAHNHOFPLATZ 3, ST.GALLEN



The stylish Hotel Metropol is located in the city center, opposite the train station of St. Gallen. Look forward to elegant rooms, gourmet cuisine and free Wi-Fi. The rooms are equipped with cable TV and tea and coffee making facilities. All Hotel Metropol rates include a welcome drink, room service, shoe cleaning service and free use of the tea and fruit station.

- Elevator available
- Wheelchair accessible rooms available



T +41 71 228 32 32  
info@hotel-metropol.ch  
www.hotel-metropol.ch

Free public transport ticket ✓

Price range: \$ \$

## FEEL AT HOME, KURVENSTRASSE 6 + 9, LUSTMÜHLE

"Feel at Home" consists of two 3-bedroom apartments and one 2-bedroom apartment, each accommodating 4-6 people and featuring a living room with dining area, a private kitchen, and a bathroom. Additionally, one of the apartments is wheelchair accessible. Towels and bed linens are provided.

- Free WiFi
- Private parking
- Shared use of the on-site laundry room
- 2-minute walk from the clinic



T +41 79 381 21 41  
feelathome@gmx.ch  
www.feel-home.info

Clinic in walking distance ✓

Price range: \$

